



Holland Park Avenue, Kensington, W11

£1,550,000

A modern luxurious two bedroom flat situated on the sixth floor within this portered development in the heart of Holland Park & Shepherds Bush.

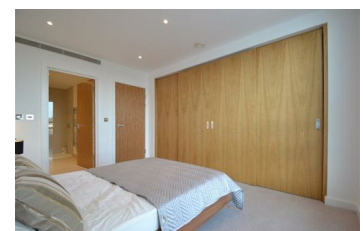
The property comprises spacious reception room with a dining space, a modern open plan kitchen with wine cooler, two double bedrooms, two luxury bathrooms (one of them is en-suite) and a private balcony.

The property further benefits from lots of natural lights, ample storage space, a day porter (Mon-Fri between 8am and 5pm), communal garden, lift access and underground parking (optional).

The development is ideally located within walking distance to Shepherds Bush (Central & Overground lines) tube station and also National Rail service.

The property is enviably located just stones throw away from Westfield shopping centre and within easy reach of transport links into and out of central London, including Shepherds Bush, Shepherds Bush Market and Holland Park.

- Recently built development
- Two double bedrooms
- Day porter
- Spacious reception with dining space
- Two bathrooms
- Open plan kitchen with wine cooler
- Private balcony



Energy Efficiency Rating		Environmental Impact (CO ₂) Rating	
Current	Potential	Current	Potential
A	A	A	A
B	B	B	B
C	C	C	C
D	D	D	D
E	E	E	E
F	F	F	F
G	G	G	G

England & Wales 2008/1/EC